

TABLE OF CONTENTS

Dimensions and Setting Out	Page 2
QuelCast110 dimensions	Page 2
QuelCast160 dimensions	Page 3
QuelCast50 dimensions	Page 3
QuelCast Manifold dimensions	Page 4
QuelCast step-by-step installation guide	Page 5
Extending a QuelCast to suit slab of greater than 250mm	Page 10
Reducing a QuelCast to suit slab of less than 250mm	Page 10
Manifold Recess Former step by step installation guide	Page 11
Cable or small diameter pipe installation guide	Page 12

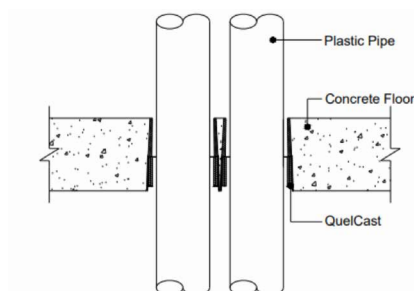


QuelCast CE Marked Cast In Fire Collar DIMENSIONS & INSTALLATION GUIDE

QUELCAST DIMENSIONS AND SETTING OUT INFORMATION:

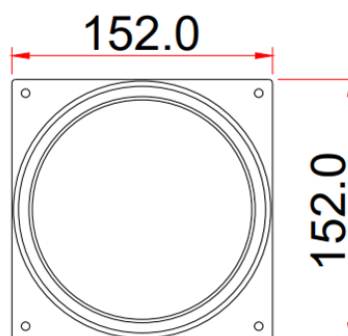
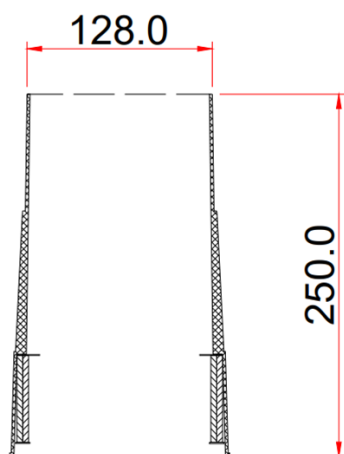
The standard product height is 250mm to suit 250mm deep slabs but can be reduced or extended, see latter section of this document for details.

They can be installed with 0mm between each base as a cluster – see Installation Detail QC-CF150-04:



QuelCast110:

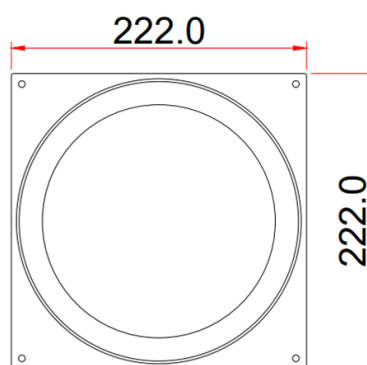
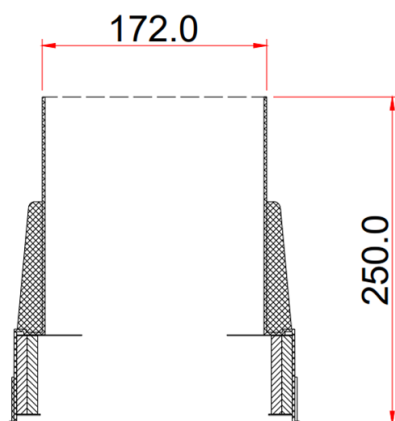
Base dimensions: 152mm x 152mm.



QuelCast CE Marked Cast In Fire Collar DIMENSIONS & INSTALLATION GUIDE

QuelCast160:

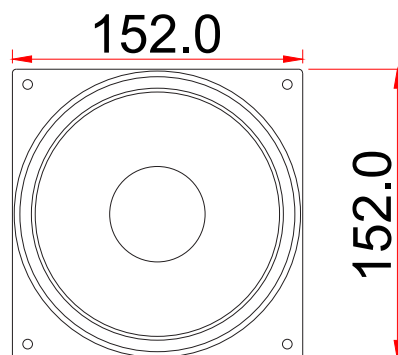
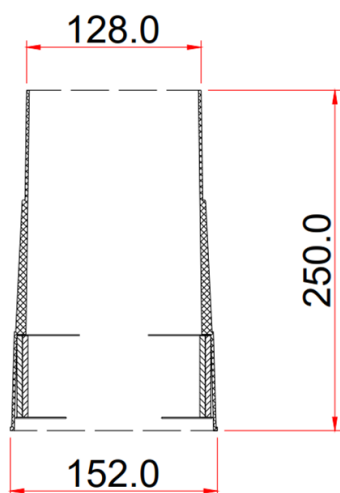
Base dimensions: 222mm x 222mm.



QuelCast50:

Base dimensions: 152mm x 152mm.

Please note that the base dimensions of the QuelCast50 and QuelCast110 are identical.

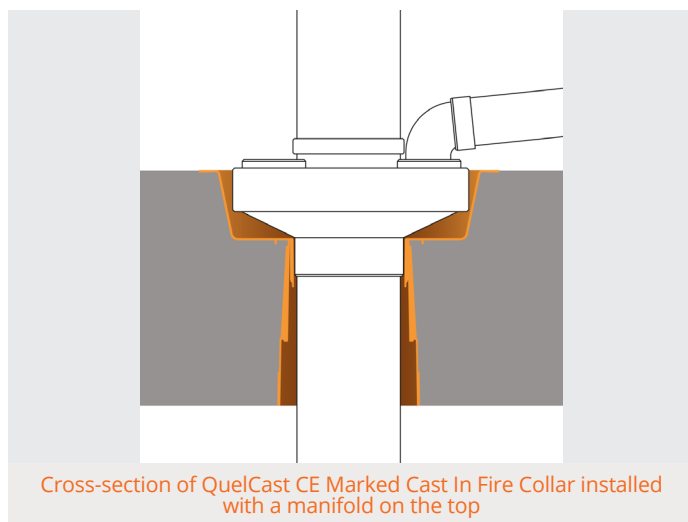
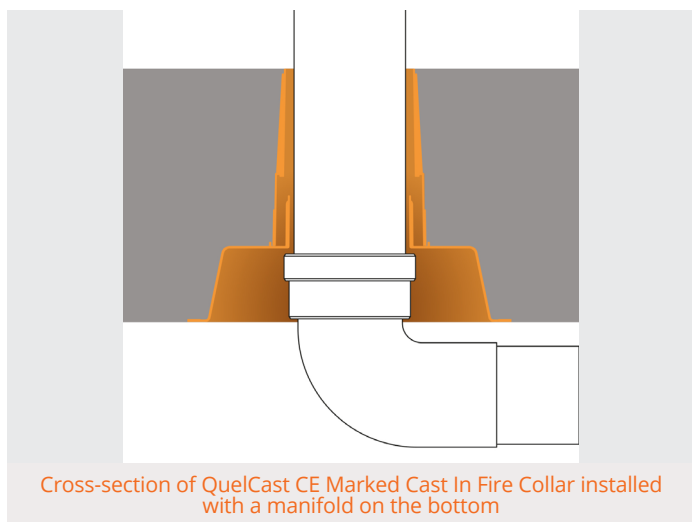


QuelCast CE Marked Cast In Fire Collar

DIMENSIONS & INSTALLATION GUIDE

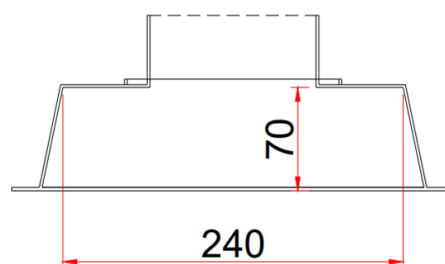
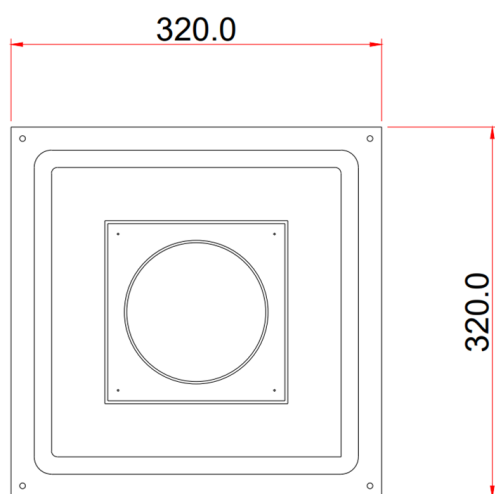
QuelCast Manifold Recess Former:

The QuelCast Manifold Recess Former facilitates the recessing of pipe fittings with the slab by creating an oversized hole, either on the top or underside of the slab:



Base dimensions for setting out purposes: 320mm x 320mm.

Intended void creation of approx. 240mm x 240mm x 70mm deep.



QuelCast Installation Instructions

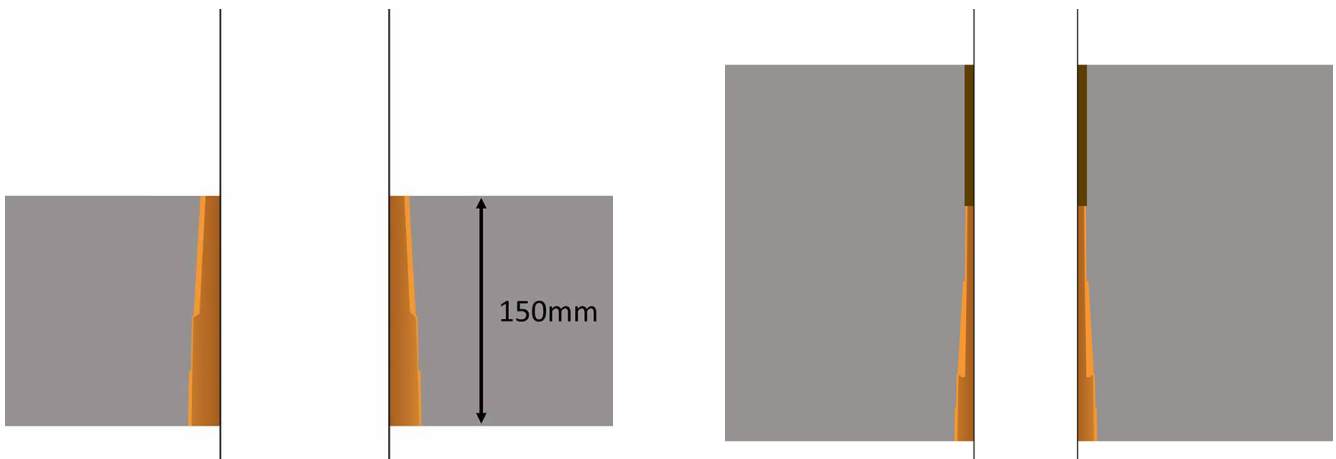
This installation guide is intended for general information only and all details should be checked against relevant supporting test evidence and certification.

1. Select the correct size QuelCast to suit the pipe diameter and specification in accordance with the relevant technical product data available. Typically the following options are available:

QuelCast160	To suit pipe diameters of up to 160mm.
QuelCast110	To suit pipe diameters of up to 110mm.
QuelCast50	To suit pipe diameters of up to 50mm.



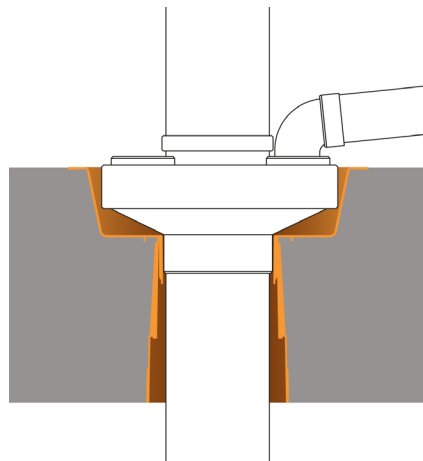
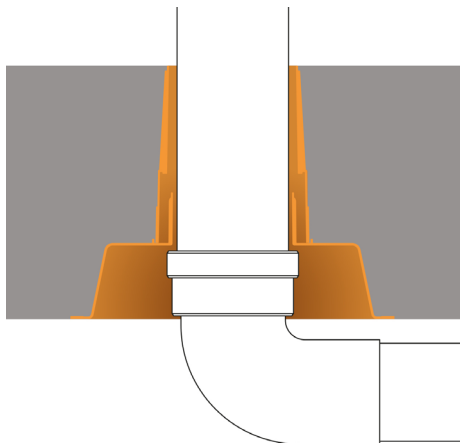
2. Check the required concrete slab depth. The standard QuelCast is 250mm high to suit a 250mm deep concrete slab. For guidance on how to reduce or extend the QuelCast please refer to the latter section: "Installation instruction for reducing or extending a QuelCast to suit differing slab depths".



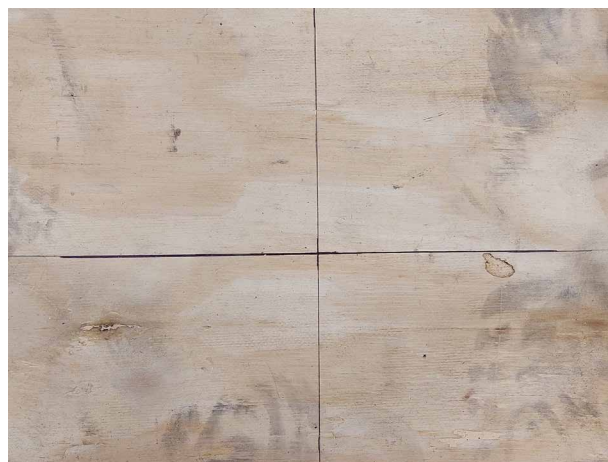
QuelCast CE Marked Cast In Fire Collar

DIMENSIONS & INSTALLATION GUIDE

- 3.** Check whether a QuelCast Manifold Recess Former is required to suit pipe fittings either on the top or underside of the concrete slab. Adjust and/or fit the Manifold as required – refer to latter section: “Installation instruction for fitting a Manifold Recess Former to QuelCast Cast In Fire Collar”.



- 4.** Mark the shuttering formwork with a cross where the pipe is to pass through the floor.



- 5.** Select the correct QuelCast to suit the required pipe diameter



QuelCast CE Marked Cast In Fire Collar DIMENSIONS & INSTALLATION GUIDE

- 6.** Position the QuelCast Cast In Fire Collar over the cross using the centre line marker points to align the unit.



- 7.** Multiple products can be positioned side by side or in a cluster with the bases touching.



- 8.** Fix the QuelCast to the formwork using suitable nails/screws through the preformed holes in the 4 corners.



QuelCast CE Marked Cast In Fire Collar DIMENSIONS & INSTALLATION GUIDE

- 9.** Position reinforcing bar and pour concrete as specified.



- 10.** Once cured, remove the shuttering formwork – note that the corners of the QuelCast may break off depending on the fixings used – this does not affect the performance of the product and is in fact to facilitate easy removal of the shuttering formwork.



- 11.** When the pipework is ready to be installed, remove the robust cap which is designed to provide a safe working surface until removed.



- 12.** Insert pipe taking care not to damage or dislodge the rubber smoke seal located inside the QuelCast.



- 13.** Job done! No extra work, backfill or sealant is required where the correct diameter pipe is used in the correct QuelCast. For QuelCast50 and where smaller diameter pipes are used inside larger collars then refer to the latter section of this document.



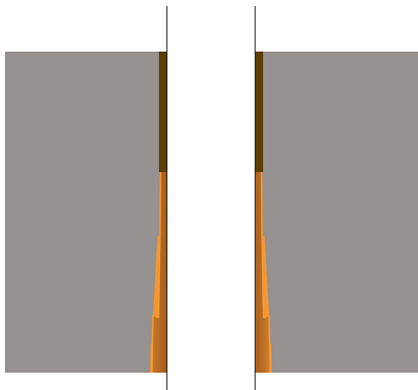
DIFFERING SLAB DEPTH:

The standard QuelCast is 250mm high to suit a 250mm deep concrete slab but they can be reduced or extended to suit differing slab depth – this is a service that Quelfire offer in house so that the product is delivered to site ready to install however it can be done on site too.

Installation instruction for extending a QuelCast to suit a slab of more than 250mm depth:

The QuelCast can be fitted with extension tubes to suit slab depths of greater than 250mm – this is a service that Quelfire offer in house so that the product is delivered to site ready to install however it can be done on site too as follows:

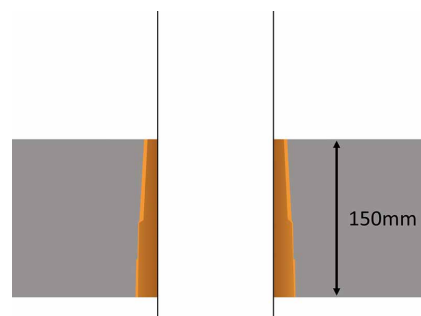
- ❏ Remove the cap,
- ❏ Select correct diameter extension tube and insert onto the QuelCast pushing down until fully seated,
- ❏ Measure up from the base of the QuelCast to the correct slab depth height,
- ❏ Cut the extension tube with a sharp saw or knife,
- ❏ Replace the cap,
- ❏ Finally, we recommend sealing the cap with self-adhesive tape to ensure no seepage.



Installation instruction for reducing a QuelCast to suit a slab depth of between 250mm and 150mm:

The QuelCast can be cut down to suit slab depths of as little as 150mm - this is a service that Quelfire offer in house so that the product is delivered to site ready to install however it can be done on site too as follows:

- ❏ Remove the cap,
- ❏ Cut the top of the QuelCast with a saw,
- ❏ Replace the cap,
- ❏ Finally, we recommend sealing the cap with self-adhesive tape to ensure no seepage.



Installation instruction for fitting a Manifold Recess Former to a QuelCast Cast In Fire Collar

A.



A - On the Top:

- ❶ Remove the cap,
- ❷ Cut/extend the QuelCast body to suit the slab depth as required taking into consideration the depth of the Manifold Recess Former,
- ❸ Push the Manifold Recess Former onto the QuelCast Collar until fully seated,
- ❹ Ensure the temporary infill is in place and sealed with self-adhesive tape.
- ❺ Secure the complete unit as normal.

B.



B - On the Underside:

- ❶ Cut the spigot off the Manifold,
- ❷ Position the QuelCast within the indentation marks,
- ❸ Secure the QuelCast to the Manifold Recess Former using steel self-tapping screws,
- ❹ Position and secure the complete unit as described for the main QuelCast using the centre line locator marks and preformed fixing holes.

Installation instruction for backfilling around pipes/cables:

Where a 110mm diameter pipe is used in a QuelCast110 and a 160mm diameter in a QuelCast160, no extra work, backfill or sealant is required.



Where a smaller diameter pipe is used such as a 75mm diameter in a QuelCast110 and always in the case of a QuelCast50 and cable bunches, a 45kg/m³ rockfibre insulation



should be used to pack around the pipe. This should be installed within the QuelCast, above the rubber smoke seal up to the top of the concrete floor slab.



Technical Support & Guidance:

Should you require any further information regarding this product, please do not hesitate to contact the technical department at Quelfire Ltd.

Tel: **0161 928 7308**. Email: technical@quelfire.co.uk

Please be aware that this document is intended for general information only and all details should be checked against all relevant supporting test evidence, certification and installation guidelines. Use of alternative components or deviations from the instructions in any way is likely to mean that the installation will not comply with the assessed rating.

Quelfire Ltd does not accept responsibility for the consequences of using Quelfire products in applications or for purposes not authorised by Quelfire Ltd. Expert advice should be sought where such applications are contemplated.

The policy of Quelfire Ltd is one of constant improvement. Installers should therefore ensure they are working from the latest published drawings and instructions. Whilst Quelfire will endeavour to keep its publications up to date, the accuracy of the information contained within this drawing may be affected by pertinent changes in the law or regulatory requirements and alterations or amendments to the specification of Quelfire products.

All information contained in this document is given in good faith and is provided for guidance only. Any drawings provided are for illustrative purposes only. As Quelfire Ltd has no control over the methods or competence of installation and of prevailing site conditions, no warranties, expressed or implied, is intended to be given as to the actual performance of the product mentioned or referred to herein and no liability whatsoever will be accepted for any loss, damage or injury arising from the use of the information given.