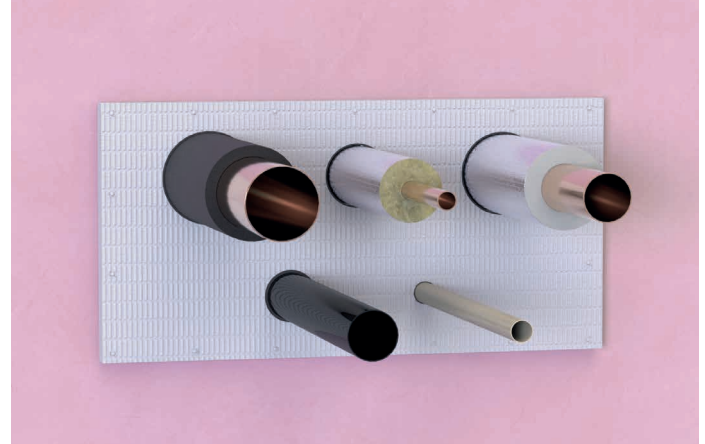


QuelCoil CE Marked Continuous Intuwrap is a universal intumescent pipe wrap used to maintain the fire rating of walls where they have been penetrated by plastic pipes and/or metallic pipes with combustible insulation. It can be cut to length on site.



QuelCoil CE Marked Continuous Intuwrap



QuelCoil CE Marked Continuous Intuwrap used in conjunction with QuelStop Fire Batt

FEATURES & BENEFITS

- Up to 2 hour fire rating (EI120)
- Supplied in a 25m coil and cut to length on site
- No mechanical fixings required
- Suitable for use in flexible walls and rigid walls
- Suitable for use in QuelStop Fire Batt System
- Suitable for use with QF2 Fire Protection Compound in concrete floors
- Suitable for PVC, HDPE and PP Pipes
- Suitable for plastic pipes up to 160mm diameter
- Suitable for use around metal pipes with insulation
- Suitable for use around pipe insulation up to 50mm thick
- Performance unaffected by weathering (Type X Durability)
- CE Marked

STANDARDS & APPROVALS

- Tested to BS EN 1366-3:2009
- CE Marked
- Type X Durability Testing
- Classified According to EN 13501-2: 2007 + A1: 2009



The Warringtonfire Logo displayed is the trademark of Warringtonfire registered in the United Kingdom. The Warringtonfire Logo is evidence that the products denoted as 'Tested by Warringtonfire' were tested to BSEN 1366-3: 2009 in England between September 22nd 2015 and January 7th 2021



This product is CE Marked.

SIZES

- 25 metre coil 2mm x 50mm

COMPOSITION

QuelCoil Intuwrap is supplied as a 25 metre long roll of 50x2mm intumescent. Included in the individual box is a roll of self-adhesive fibre reinforced tape which is used to secure the wrap around the services.

APPLICATION

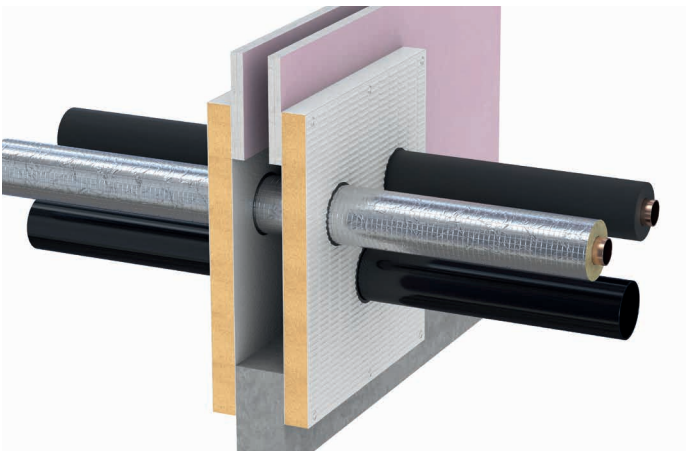
The QuelCoil Intuwrap is a very universal product that is cut to length on site to suit the specific pipe diameter and material. It can be used around insulated non-combustible pipes, in which case 2 layers of QuelCoil are required around the insulation. QuelCoil can also be used directly around combustible plastic pipes, in which case the number of layers ranges between 1 and 6 layers and depends on the outside diameter of the plastic pipe.

QuelCoil Intuwrap can be installed directly into both solid masonry walls, fire rated plasterboard partition walls (where the specification of the wall and insulation is appropriate), QuelStop Fire Batt and QF2 Fire Protection Compound. The QuelCoil is simply wrapped around the services to achieve the correct number of layers, it can be cut to length with a sharp knife and then sealed with a self-adhesive fibre reinforced tape.

There must be no gap around the outside of the QuelCoil Intuwrap once installed so it is important to drill holes for services accurately taking into consideration the number of layers of QuelCoil required. For oversized holes in walls it will be necessary to install the QuelCoil in conjunction with the QuelStop Fire Batt system. Where holes in floors are incorrectly drilled oversized or larger square holes are left or formed then the hole will need shuttering and the whole penetration backfilling with QF2 Fire Protection Compound.

There must be no gap around the QuelCoil Intuwrap and the Intuwrap must be fitted flush with the underside of the concrete slab or fire seal and/or flush with the face of the wall or QuelStop Fire Batt.

Full installation details and step by step instructions are available to show the options.



Cross section of QuelCoil Continuous Intuwrap used around insulated copper pipes and plastic pipe in QuelStop Fire Batt



Cross section of QuelCoil Continuous Intuwrap installed directly into wall

PERFORMANCE

Plastic Pipe Diameter	Number of QuelCoil Intuwrap layers required
≤ 50mm	1 layer 50mm x 2mm
51 – 75mm	2 layers 50mm x 2mm
76 – 110mm	3 layers 50mm x 2mm
111 - 160mm	6 layers 50mm x 2mm
Up to 50mm thick insulation with up to 159mm diameter metallic pipes	2 layers 50mm x 2mm

Technical Support & Guidance:

Should you require any further information regarding this product, please do not hesitate to contact the technical department at Quelfire Ltd.

Tel: **0161 928 7308**. Email: technical@quelfire.co.uk

Please be aware that this document is intended for general information only and all details should be checked against all relevant supporting test evidence, certification and installation guidelines.

Use of alternative components or deviations from the instructions in any way is likely to mean that the installation will not comply with the assessed rating.

Quelfire Ltd does not accept responsibility for the consequences of using Quelfire products in applications or for purposes not authorised by Quelfire Ltd. Expert advice should be sought where such applications are contemplated.

The policy of Quelfire Ltd is one of constant improvement. Details are subject to change and/or withdrawal without notification therefore you must ensure this is the latest published documentation. Whilst Quelfire will endeavour to keep its publications up to date, the accuracy of the information contained within this document may be affected by pertinent changes in the law or regulatory requirements and alterations or amendments to the specification of Quelfire products.

All information contained in this document is given in good faith and is provided for guidance only. Any drawings provided are for illustrative purposes only. As Quelfire Ltd has no control over the methods or competence of installation and of prevailing site conditions, no warranties, expressed or implied, is intended to be given as to the actual performance of the product mentioned or referred to herein and no liability whatsoever will be accepted for any loss, damage or injury arising from the use of the information given. Full terms and conditions can be accessed at: <https://quelfire.co.uk/terms-conditions-of-sale/>